



2021-2022 Annual Report

A year of accomplishments.

TABLE OF CONTENTS

A message from our chairperson and executive director.....	3
Our board of directors.....	4
Audited financial statements.....	5
Our donors.....	14
A year of success, comfort & care.....	16
\$5 Club.....	20

A MESSAGE FROM OUR CHAIRPERSON & EXECUTIVE DIRECTOR

For the second year in a row, we have been on the frontlines of the COVID-19 global pandemic. As we reflect on the impact of the COVID-19 pandemic on our people, our communities, and the healthcare system as a whole, we are incredibly proud of how we worked together as a united team and the contributions we made to the regional and system response to COVID-19. We have built stronger relationships with our staff and community partners, which will in turn strengthen our healthcare system and enhance the care we provide.

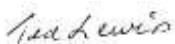
This year, we continue our work to raise awareness of what we need to do to help meet the current and growing needs of our communities and keep care close to home. We thank our exceptional staff who continue to provide excellent care, and members of our communities who have shown their support for the foundation and region.

To our donors, nothing we do would be possible without your unwavering commitment to the foundation. Thank you for your generous donations, for your perseverance in the face of extraordinary challenge and uncertainty, and for thinking of us while being consumed not only with the health and safety of yourself and family members, but with the education of your children, the loss of face-to-face connections, and missing once-in-a-lifetime events with your loved ones. Thank you also for your belief in the foundation as trusted stewards of your investment and in our ability to ensure that your gift would be used to its fullest potential now and into the future.

We are incredibly proud of the achievements and moments we experienced together throughout the past year.

We encourage you to read more in the achievements and stories shared below.

Thank you,



Ted Lewis
Chair



Pamela McCallum
Executive Director

2021-2022

OUR BOARD OF DIRECTORS

Ted Lewis	Chair
Brent Wynnyk	Vice-Chair
Cynthia Ostapyk	Board Member
DJ Sigmundson	Board Member
Dr. Dan Lindsay	Board Member
Dr. Jonah Fulmore	Board Member
Ernest Stefanson	Board Member
Jay Machado	Board Member
Melissa Fuerst	Board Member
Michele Polinuk	Board Member
Tracey Epp	Board Member
Vanessa Foster	Board Member

AUDITED FINANCIAL STATEMENTS



Tel.: 204 956 7200
Fax.: 833 888 1678
Toll Free: 800 268 3337
www.bdo.ca

BDO Canada LLP
201 Portage Avenue, 26th Floor
Winnipeg MB R3B 3K6 Canada

Independent Auditor's Report

To the Board of Directors of Interlake-Eastern Health Foundation Inc.

Opinion

We have audited the financial statements of Interlake-Eastern Health Foundation Inc. ("Foundation"), which comprise the statement of financial position as at March 31, 2022, and the statement of changes in fund balances, the statement of operations and the statement of cash flows for the year then ended, and notes to the financial statements, including a summary of significant accounting policies.

In our opinion, the accompanying financial statements present fairly, in all material respects, the financial position of the Foundation as at March 31, 2022, and the results of its operations and its cash flows for the year then ended in accordance with Canadian accounting standards for not-for-profit organizations.

Basis for Opinion

We conducted our audit in accordance with Canadian generally accepted auditing standards. Our responsibilities under those standards are further described in the *Auditor's Responsibilities for the Audit of the Financial Statements* section of our report. We are independent of the Foundation in accordance with the ethical requirements that are relevant to our audit of the financial statements in Canada, and we have fulfilled our other ethical responsibilities in accordance with these requirements. We believe that the audit evidence we have obtained is sufficient and appropriate to provide a basis for our opinion.

Responsibilities of Management and Those Charged with Governance for the Financial Statements

Management is responsible for the preparation and fair presentation of these financial statements in accordance with Canadian accounting standards for not-for-profit organizations, and for such internal control as management determines is necessary to enable the preparation of financial statements that are free from material misstatement, whether due to fraud or error.

In preparing the financial statements, management is responsible for assessing the Foundation's ability to continue as a going concern, disclosing, as applicable, matters related to going concern and using the going concern basis of accounting unless management either intends to liquidate the Foundation or to cease operations, or has no realistic alternative but to do so.

Those charged with governance are responsible for overseeing the Foundation's financial reporting process.

Auditor's Responsibilities for the Audit of the Financial Statements

Our objectives are to obtain reasonable assurance about whether the financial statements as a whole are free from material misstatement, whether due to fraud or error, and to issue an auditor's report that includes our opinion. Reasonable assurance is a high level of assurance, but is not a guarantee that an audit conducted in accordance with Canadian generally accepted auditing standards will always detect a material misstatement when it exists. Misstatements can arise from fraud or error and are considered material if, individually or in the aggregate, they could reasonably be expected to influence the economic decisions of users taken on the basis of these financial statements.



As part of an audit in accordance with Canadian generally accepted auditing standards, we exercise professional judgment and maintain professional skepticism throughout the audit. We also:

- Identify and assess the risks of material misstatement of the financial statements, whether due to fraud or error, design and perform audit procedures responsive to those risks, and obtain audit evidence that is sufficient and appropriate to provide a basis for our opinion. The risk of not detecting a material misstatement resulting from fraud is higher than for one resulting from error, as fraud may involve collusion, forgery, intentional omissions, misrepresentations, or the override of internal control.
- Obtain an understanding of internal control relevant to the audit in order to design audit procedures that are appropriate in the circumstances, but not for the purpose of expressing an opinion on the effectiveness of the Foundation's internal control.
- Evaluate the appropriateness of accounting policies used and the reasonableness of accounting estimates and related disclosures made by management.
- Conclude on the appropriateness of management's use of the going concern basis of accounting and, based on the audit evidence obtained, whether a material uncertainty exists related to events or conditions that may cast significant doubt on the Foundation's ability to continue as a going concern. If we conclude that a material uncertainty exists, we are required to draw attention in our auditor's report to the related disclosures in the financial statements or, if such disclosures are inadequate, to modify our opinion. Our conclusions are based on the audit evidence obtained up to the date of our auditor's report. However, future events or conditions may cause the Foundation to cease to continue as a going concern.
- Evaluate the overall presentation, structure and content of the financial statements, including the disclosures, and whether the financial statements represent the underlying transactions and events in a manner that achieves fair presentation.

We communicate with those charged with governance regarding, among other matters, the planned scope and timing of the audit and significant audit findings, including any significant deficiencies in internal control that we identify during our audit.

BDO Canada LLP

Chartered Professional Accountants

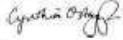
Winnipeg, Manitoba
September 8, 2022


INTERLAKE-EASTERN HEALTH FOUNDATION INC.
Statement of Financial Position

As at March 31, 2022

	Unrestricted Fund	Endowment Funds	Externally Restricted Funds	2022 Total	2021 Total
Assets					
Current Assets					
Cash and bank	\$ 300,366	\$ -	\$ -	\$ 300,366	\$ 698,523
Accounts receivable (Note 3)	21,600	-	-	21,600	18,422
	321,966	-	-	321,966	716,945
Investments (Note 4)	413,936	233,542	-	647,478	-
Interfund balances (Note 5)	(609,695)	26,551	583,144	-	-
	<u>\$ 126,207</u>	<u>\$ 260,093</u>	<u>\$ 583,144</u>	<u>\$ 969,444</u>	<u>\$ 716,945</u>
Liabilities and Fund Balances					
Current Liabilities					
Accounts payable and accrued liabilities	\$ 9,421	\$ -	\$ -	\$ 9,421	\$ 8,647
Deferred contributions (Note 6)	3,182	-	-	3,182	3,182
	12,603	-	-	12,603	11,829
Fund Balances					
Unrestricted	113,604	-	-	113,604	102,823
Endowment (Note 9)	-	260,093	-	260,093	249,780
Externally restricted (Note 10)	-	-	583,144	583,144	352,513
	113,604	260,093	583,144	956,841	705,116
	<u>\$ 126,207</u>	<u>\$ 260,093</u>	<u>\$ 583,144</u>	<u>\$ 969,444</u>	<u>\$ 716,945</u>

Approved by the Board of Directors:





INTERLAKE-EASTERN HEALTH FOUNDATION INC.
Statement of Changes in Fund Balances

For the year ended March 31, 2022

	Unrestricted Fund		Endowment Funds		Externally Restricted Funds		Total	Total
	2022	2021	2022	2021	2022	2021	2022	2021
Fund balances, beginning of year	\$ 102,823	\$ 82,770	\$ 249,780	\$ 223,367	\$ 352,513	\$ 250,868	\$ 705,116	\$ 557,005
Excess of revenue over expenses for the year	10,781	20,053	10,313	26,413	230,631	101,645	251,725	148,111
Fund balances, end of year	<u>\$ 113,604</u>	<u>\$ 102,823</u>	<u>\$ 260,093</u>	<u>\$ 249,780</u>	<u>\$ 583,144</u>	<u>\$ 352,513</u>	<u>\$ 956,841</u>	<u>\$ 705,116</u>

INTERLAKE-EASTERN HEALTH FOUNDATION INC.
Statement of Operations

For the year ended March 31, 2022

	Unrestricted Fund		Endowment Funds		Externally Restricted Funds		Total	Total
	2022	2021	2022	2021	2022	2021	2022	2021
Revenue								
Donations	\$ -	\$ -	\$ 16,127	\$ 23,250	\$ 315,796	\$ 257,800	\$ 331,923	\$ 281,050
Donations-in-kind	-	-	-	-	4,956	6,408	4,956	6,408
Fundraising								
Contributions from IERHA	116,720	109,353	-	-	-	-	116,720	109,353
Other	1,044	318	-	-	-	-	1,044	318
Investment income								
Interest and dividends	3,877	5,390	4,720	3,163	-	-	8,597	8,553
Realized gain on sale of investments	1,512	-	-	-	-	-	1,512	-
Unrealized loss on investments	(356)	-	(10,534)	-	-	-	(10,890)	-
Investment management fees	(1,512)	-	-	-	-	-	(1,512)	-
	<u>121,285</u>	<u>115,061</u>	<u>10,313</u>	<u>26,413</u>	<u>320,752</u>	<u>264,208</u>	<u>452,350</u>	<u>405,682</u>
Expenses								
Communications and development	-	294	-	-	-	-	-	294
Information technology support	950	900	-	-	-	-	950	900
Office supplies	63	23	-	-	-	-	63	23
Professional fees	20,364	8,408	-	-	-	-	20,364	8,408
Rent	9,495	9,000	-	-	-	-	9,495	9,000
Salaries and benefits	78,533	75,646	-	-	-	-	78,533	75,646
Service charges	1,099	737	-	-	-	-	1,099	737
	<u>110,504</u>	<u>95,008</u>	<u>-</u>	<u>-</u>	<u>-</u>	<u>-</u>	<u>110,504</u>	<u>95,008</u>
Excess of revenue over expenses before major and planned gifts	10,781	20,053	10,313	26,413	320,752	264,208	341,846	310,674
Major and planned gifts	-	-	-	-	90,121	162,563	90,121	162,563
Excess of revenue over expenses for the year	<u>\$ 10,781</u>	<u>\$ 20,053</u>	<u>\$ 10,313</u>	<u>\$ 26,413</u>	<u>\$ 230,631</u>	<u>\$ 101,645</u>	<u>\$ 251,725</u>	<u>\$ 148,111</u>

INTERLAKE-EASTERN HEALTH FOUNDATION INC.
Statement of Cash Flows

For the year ended March 31	2022	2021
Cash Flows from Operating Activities		
Excess of revenue over expenses for the year	\$ 251,725	\$ 148,111
Items not affecting cash		
Unrealized loss on investments	10,890	-
	<u>262,615</u>	<u>148,111</u>
Changes in non-cash operating capital items		
Accounts receivable	(3,178)	8,104
Accounts payable and accrued liabilities	774	812
Deferred contributions	-	(510)
	<u>260,211</u>	<u>156,517</u>
Cash Flows from Investing and Financing Activities		
Purchase of investments	(658,368)	-
Net increase (decrease) in cash and bank during the year	<u>(398,157)</u>	<u>156,517</u>
Cash and bank, beginning of year	698,523	542,006
Cash and bank, end of year	<u>\$ 300,366</u>	<u>\$ 698,523</u>

INTERLAKE-EASTERN HEALTH FOUNDATION INC.

Notes to Financial Statements

For the year ended March 31, 2022

1. Nature of Operations

Interlake-Eastern Health Foundation Inc. (the "Foundation") was established to benefit the citizens of Interlake-Eastern health region by supporting health care needs in the region.

The Foundation was incorporated in 2015 under the Corporations Act of Manitoba. The Foundation is a registered charity and is classified as a public foundation for purposes of the Income Tax Act and accordingly is exempt from income taxes.

2. Summary of Significant Accounting Policies

a) Basis of Accounting

The financial statements have been prepared using Canadian accounting standards for not-for-profit organizations.

b) Fund Accounting

The Foundation follows the restricted fund method of accounting for contributions.

The Unrestricted Fund relates to the Foundation's program delivery and administrative activities. No restrictions have been imposed by the donors or Board of Directors on these funds. These funds are managed in accordance with general Board policies and may be restricted only through Board of Directors motion.

Externally Restricted Funds represent contributions restricted by donors for the highest priority needs and for areas of interest. Board policy states that these funds must be spent within twenty-four months of receipt.

Endowment Funds represent contributions to be maintained in perpetuity and are comprised of funds subject to varying degrees of restriction on the use of capital and income. Unless specified by the donor, investment income earned on the Endowment Fund is reinvested in the Endowment Fund.

INTERLAKE-EASTERN HEALTH FOUNDATION INC.
Notes to Financial Statements

For the year ended March 31, 2022

2. Summary of Significant Accounting Policies (continued)

c) Revenue Recognition

Restricted contributions are recognized as revenue of the appropriate restricted fund when received or receivable. Unrestricted contributions are recognized as revenue of the Unrestricted Fund in the year received or receivable if the amount to be received can be reasonably estimated and collection is reasonably assured.

Contributions from the Interlake-Eastern Regional Health Authority (IERHA) are recognized as revenue when specific ancillary revenue is earned by IERHA if the amount to be received can be reasonably estimated and collection is reasonably assured.

Interest revenue and investment income are recognized as revenue in the period earned.

Other revenue is recognized as revenue in the period received or receivable if the amount to be received can be reasonably estimated and collection is reasonably assured.

d) Contributed Services

The Foundation is governed and supported by volunteers. Contributed services from volunteers are not reflected in the financial statements due to the difficulty in determining their fair value.

The IERHA is committed to the Foundation and provides resources for the Executive Director position for the Foundation. The IERHA pays the Executive Director salary and benefits and provides office space, supplies, office equipment and information technology support. Contributed resources from IERHA have been recorded in these financial statements at their fair value.

e) Financial Instruments

Financial instruments are recorded at fair value when acquired or issued. Financial assets are tested for impairment when changes in circumstances indicate the asset could be impaired. Transaction costs on the acquisition, sale or issue of financial instruments are expensed for those items remeasured at fair value at each statement of financial position date and charged to the financial instrument for those measured at amortized cost.

f) Use of Estimates

The preparation of financial statements in accordance with Canadian accounting standards for not-for-profit organizations requires management to make estimates and assumptions that affect the reported amounts of assets and liabilities and disclosure of contingent assets and liabilities at the date of the financial statements and the reported amounts of revenue and expenses during the year. Actual amounts could differ materially from those estimates.

INTERLAKE-EASTERN HEALTH FOUNDATION INC.
Notes to Financial Statements

For the year ended March 31, 2022

3. Accounts Receivable

	2022	2021
Due from IERHA	\$ 21,057	\$ 18,277
GST receivable	543	145
	\$ 21,600	\$ 18,422

4. Investments

The investment portfolio consists of the following instruments:

	2022	2021
Alternatives	\$ 190,747	\$ -
Cash and savings	126,326	-
Equity	165,356	-
Fixed income	109,234	-
Multi-asset	55,815	-
	\$ 647,478	\$ -

5. Interfund Balances

The amounts due from (to) other funds bear no interest, have no set terms of repayment and are unsecured.

6. Deferred Contributions

The Pine Falls Health Auxiliary raised funds in prior years for the purchase of waiting room furniture for the Pine Falls Health Centre with surplus funds remaining at the conclusion of the project. These funds have been restricted by the Foundation Board of Directors for cable and internet charges for the facility waiting room.

	2022	2021
Balance, beginning of year	\$ 3,182	\$ 3,692
Less: Recognized as revenue during the year	-	(510)
Balance, end of year	\$ 3,182	\$ 3,182

INTERLAKE-EASTERN HEALTH FOUNDATION INC.
Notes to Financial Statements

For the year ended March 31, 2022

8. Financial Instrument Risk Management (continued)

Foreign Exchange Risk

Foreign exchange risk is the risk that the fair value or future cash flows of a financial instrument will fluctuate because of changes in foreign exchange rates. The Foundation is exposed to foreign exchange risk since it holds a portion of its investments in U.S. and international equities. The Foundation follows its investment policy statements to monitor the investments in an effort to minimize its exposure to foreign exchange risk.

9. Endowment Funds

Endowment funds consist of the following as at March 31:

	<u>2022</u>	<u>2021</u>
Bill and Olive Cholosky Fund	\$ 105,721	\$ 108,060
Cynthia Turner Fund	18,812	15,200
Gaynor Family Children's Fund	20,687	21,145
Howard & Barbara Buffie and Family Fund	9,835	-
IERHA Health Fund	78,155	79,892
McLeary Dalman Fund	23,443	23,463
McLeary Family Fund	3,440	2,020
	<u>\$ 260,093</u>	<u>\$ 249,780</u>

10. Externally Restricted Funds

Externally restricted funds consist of the following as at March 31:

	<u>2022</u>	<u>2021</u>
Areas of Interest		
Acute Care	\$ 315,317	\$ 124,968
Adult Day Programs and Healthy Living	25,688	25,552
Camp Stepping Stones	8,455	8,455
Cancer Care	59,687	51,917
Clinical Teaching Unit	8,595	3,595
COVID-19	96	(2,719)
Long Term Care	73,888	74,187
Mental Health and Addictions	2,614	5,197
Palliative Care	58,292	37,325
	<u>552,632</u>	<u>328,477</u>
Highest priority	<u>30,512</u>	<u>24,036</u>
	<u>\$ 583,144</u>	<u>\$ 352,513</u>

INTERLAKE-EASTERN HEALTH FOUNDATION INC.

Notes to Financial Statements

For the year ended March 31, 2022

11. Uncertainty Due To COVID-19 Pandemic

On March 13, 2020, the World Health Organization declared COVID-19 a global pandemic. This has had adverse impacts in Canada and has had a significant effect on the financial markets. As this continues, there could be further impact on the Foundation, its donors and its community of service. Management has adapted their fundraising activities in light of the pandemic and is actively monitoring the effect on its financial position, liquidity and operations. Given the daily evolution of the pandemic and the global responses to curb its spread, the Foundation is not able to estimate fully the effects at this time.

12. Comparative Amounts

Certain of the comparative amounts including contributed resources from IERHA from prior year have been restated to conform to the current year's presentation.

OUR DONORS

Thank you to each and every one of our generous donors.

Harold & Debbie Laninga	Elizabeth Storoschuk	Marion McNeill
Alex Vajcner	Elyse Gillon	Marjorie Seel
Alfred Schalk	Ernest Stefanson	Marlene & Michael Marion
All Charities Campaign	Estate of Ann Czuby	Martin Chapman
Allan & Betty Jones	Estate of Anna Laura Shepherd	Marty Terry
Allan & Evelyn Goodman	Estate of Robert Leslie Mollard	Mary Bouma
Allison Moman	Eugene & Phyllis Starchuk	Mervyn Gunter
Almer Dreffs	Eva Vinderskov	Michael Attas
Amanda Stephens	Farm Credit Canada	Michael Rudkin
Anne & Carl Barg	Fred Burdett	Nadine Clarkson
Anon	Gene & Carole Sobie	Nancy Diehl
Augustine Ziffle	Gerald Holm	Ornaments for Owies
Barbara Williams	Gerda Laninga	Orville & Linda Buffie
Benevity Community Impact Fund	Glenn Harke	Palliative Manitoba
Bert Saurette	Greenwald Charitable Trust	Pamela Little
Bertha Rosen	Greg Kasprick	Patricia & Thomas Peacock
Bev Heggie	Heather Breadner	Patrick Allaire
Bev Rehill	Heather Buffie	Patti Hillier
Beverly Cole	Helen Shewchuk	Perry Ward
Bob Turner	House of Economy Community Group	Peter & Sharon Taylor
Brenda McKenzie	Howard Buffie	Philip Wiebe
Brett & Lynette Magnus	HSC Diagnostic Imaging	Pinawa Community Foundation
Brian Payne	Hugh & Juliette Smith	Pinawa Players
Brooke & Ken Kell	Ian Newman	Pitblado Law Arborg
Bruce & Lucie Hewitt	IERHA \$5 Club	Rachel Houston
Bryan Blonski	Jacob Laninga	Rachelle Buller
CAA Manitoba	Jacqueline MacFarlane	Randy & Shirley Saluk
Canada Helps	James Leveridge	Raymond & Katherine Palsson
Canadian Nuclear Laboratories	Jeannette Aminot	Rebecca Hetherington
Carl & Karen Nilsson	Jeff & Pamela Dykstra	Red River North Tourism
Carlson Com & Ind Services	Jenn Wirth	Renate Kurz
Carol Mann	Jerry & Kelly Kube	Robert & Corinne Hayden
Carolynne Pitura	Jim & Elsie Wright	Robert & Elizabeth Shewfelt
Catherine Milne	Jodie & Darrell Cornwall	Robert & Marilyn Stewart
Catherine Yates	John Wade	Robert & Wendy McLeary
Chantelle Stefanyshyn	Joseph & Ingrid Pillman	Robert Simcoe
Charles & Pearl Murphy	Joseph Koch-Schulte	Robert Turner
Charles Surgeoner	Joy McCort	Rocky Lake Colony
Cheryl Choptain	Joyce Harbour	Rosanne & John Borgfjord
Cheryl Reddick	Joyce Reid	Rose Szajewski & Family
Chris Vajcner	Joyce Wyrchowny	Roslyn Saurette
Christine Nuttall	Judie Larter	Russell & Joan Lawrence

Cindy Vair-Mirarchi	Judith Harrison	Ruth Kostiuik Wityshyn
Claire Carter	June Best	Ryan Melnyk
Colleen Loewen	June Betton	Sandra Skinner
Community Foundations of Canada	K & B Phernambucq	Selkirk & District Community Fdn
Connie & Curtis Dancyt	Karen & Dennis Nelson	Sharon Fotty-Smith
CUPE Local 3206	Kate Ward	Shira Cwang
Dale & Gisela Hiltz	Katelyn Martin	Shirley & Grant Bruchanski
Dan Kell	Kiersten McVeety	Shirley Bruchanski
Dave Elmore	Kristina Schilling	Simcha Stroes-Gascoyne
Dave McConnell	Kurt & Krystin Schroeder	SM Shinnie
David & Diane Johnston	Kurt Semmler	Standard Limestone Quarries
David & Fran Preston	Lani Europa	Stonewall & District Lions Club
David Vanderwees	Laura Macey	Stonewall Seniors Club
Deborah & Shayne Clement	Laura Phibbs	Stony Mountain Local 50026
Diane Cornwall	Lauralou Cicierski	Sunrise School Division
Diane Rainka	Laurel Woods	Tara Mack
Dolores Peluk	Lauren Walls	Ted & Eleanor Hykawy
Donald & Hedy Bjornson	Leonard Klimpke	Teresa Gmiterek
Donna Babuik	Levina Fehf	Terry Howe
Donna Paziuk	LGD of Pinawa	The North West Company
Doreen Bekkering	Linda & Hubert Parker	Theresa & Jason Zuk
Doreen Klohn	Linda Paluck	Trevor Tennant
Doreen Wilson	Lori Belza	Tricia Geurts
Dr. Cynthia Czajka-Fedirchuk	Lorraine Kozera	Violet Desrochers
Dr. Joseph Partyka	Lorraine Smith	W.S & Emily Wooster
Dr. M.A McNeill	Louise Rose	Walter MacMartin
Dr. Nicolas Van Rensburg	Ludwig Bekkering	Wanda Lester
Dr. Tony Herd	Margaret Stoles	Wanitta Stewart
Eastman Interlake Hydro	Marguerite Bright	Westshore Community Fdn Inc.
Edna Smorong	Marianne Smith	William Boblinski
Edward & Kimberly Borchartd	Marilyn Williams	William Perry
Edward Bowditch	Marilynn Piliips	Wilma Nikodem
Elizabeth Romance	Marion & Donald Schultz	Yvonne Inniss

A YEAR OF SUCCESS, COMFORT & CARE



Little Elsa provides teddy bears to each camper at Camp Stepping Stones.

Physician Giving Program Now Underway! Thank you Dr. Partyka and Dr. Van Rensburg for being the inaugural donors.



Gimli Community Health Centre receives two new Vital Signs blood pressure monitors.

Selkirk Regional Health Centre staff receive care packages from the community.



Community Living Interlake / Something Beautiful spreads joy to staff at Stonewall & District Health Centre and Rosewood Lodge Personal Care Home.

Selkirk & District Community Foundation funds specialized training for Palliative Care support staff through palliative care grant.





Bob Turner establishes the Cynthia Turner Endowment Fund in memory of his wife which will support the Interlake-Eastern Regional Health Authority's Palliative Care Program.

Interlake Eastern Health Foundation earns the Sharon Carstairs Caring Communities Award.



Zuk family t-shirt fundraiser raises \$1,050 for Arborg Palliative Care.

The Lac du Bonnet Health Centre receives donation from the Lac du Bonnet and Pinawa Foundations who worked together to purchase ankle brachial measurements (ABI) and toe pressures for the facility.



House of Economy Community Group gives generously to the Selkirk Palliative Care Program.

The South West District Palliative Care (SWDPC) Board purchases a new air mattress for the Stonewall and District Health Centre.





Farm Credit Canada enhances patient care throughout the region.



Lakeshore Hospital Guild gives generously to the local hospital in Ashern.



Local Domino's Pizza donates to "Clean Hands Count Competition" to encourage hand washing amongst health care staff.

In recognition for receiving amazing service, former patient purchases treatment chair for Gimli Cancer Care.



Manitoba Dental Foundation supports Interlake-Eastern harm reduction clients with oral health kits.

Government of Canada's Healthy Communities Initiative grants \$11,000 to Interlake Eastern Health Foundation.





Beausejour Hospital receives new vital signs blood pressure monitor from grateful patient.

Canadian Nuclear Laboratories (CNL) enhances Lac du Bonnet Health Centre with new equipment.



\$5 CLUB

The Five Dollar Club is a discretionary charitable trust, funded entirely through tax-deductible, bi-weekly payroll contributions from IERHA board members and staff. The Five Dollar Club is managed by the Interlake Eastern Health Foundation as an annual, calendar year fund in support of initiatives to improve or enhance client and patient care in the Interlake-Eastern region.

In 2021, the Five Dollar Club contributed \$21,500 to eight organizations that benefit patients and residents from across the region. Below is an update on each donation that was given from the 2021 Five Dollar Club fund.



Ashern Food Bank receives \$2,500

The Ashern Food Bank supports community members by nourishing individuals and families experiencing food insecurity.

“We appreciate any and all donations we receive at the Ashern Food Bank. Over the past year our Food Bank has seen an increase in the number of clients. We have assisted the elderly, single mothers and low-income families more than ever this past year,” Darlene Woodhouse, Executive Director Lakeshore Women's Resource Centre.

Photo L-R: Judith McCudden, Chairperson at Lakeshore Women's Resource Centre and Darlene Woodhouse, Executive Director, LWRC.

Harm Reduction Outreach Van receives \$2,500

Outreach continues to be an essential part of public health as we recover from the pandemic. The outreach van will continue to assist in providing our vulnerable community members with harm reduction kits, naloxone overdose prevention kits, vaccinations, and sexually transmitted infection testing.

“We are very gracious to be a recipient of funds from the Five Dollar Club in our region. The funds will be used toward providing outreach to populations and communities where accessibility is a factor in their health and wellbeing. The outreach van has been used to provide mobile services to people. There have been a number of COVID vaccination clinics provided by a mobile team in our region over the last year,” Maxine Zasitko, public health clinical team manager – central.



Photo L-R: IERHA Harm Reduction staff Audrey Deamel, Kelsie MacVicar, and Candyce Heckert.



Evergreen Basic Needs in Gimli receives \$2,500

Evergreen Basic Needs is a community-based organization working to eliminate hunger and food insecurity

through food distribution, education and support programs in partnership with the community.

“With this additional resource, we will be able to supplement the basic food bank hamper with more protein and fresh produce which has become increasingly costlier over the last several months. We will also be able to purchase small turkeys and

hams for our clients for Easter. This is not something we can normally do, so it will be a welcomed addition,” Karen Bowman, co-executive director, Evergreen Basic Needs.

Child Nutrition Council of Manitoba receives \$4,000

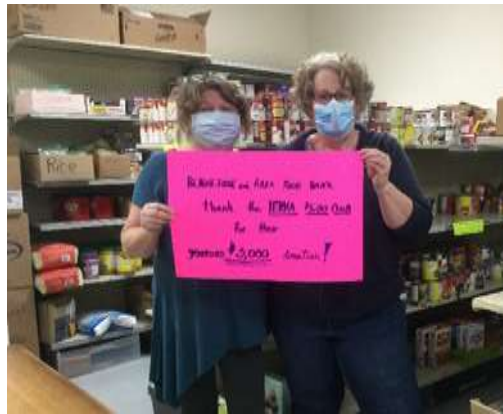
Child Nutrition Council of Manitoba is a charitable organization dedicated to helping school children learn, grow, and succeed by supporting breakfast, snack, and lunch programs. They're unique because they're based in Manitoba and all of the funds raised stay here, reaching children in regions across the province.

“Thank you to the members of the Interlake-Eastern RHA Five Dollar Club! Your club is an important community supporter of the work of the Child Nutrition Council of Manitoba. Your contributions over the years make a huge difference towards helping us support student meal programs in the Interlake Eastern Region as part of our goal of ensuring students have access to food at school,” Wendy Bloomfield, Chair, Child Nutrition Council of Manitoba.



Photo: Student from Ruth Hooker School receives meal through Child Nutrition Council of Manitoba program.

Beausejour Food Bank receives \$3,500



The Beausejour Food Bank supports community members by nourishing individuals and families experiencing food insecurity. Food banks and other charities are being faced with unprecedented need due to the pandemic.

“The Beausejour Food Bank is thrilled to be a recipient of this donation from the IERHA Five Dollar Club. Due to the presence of COVID these past months, resulting in fewer or smaller food drives, the Food Bank has needed to purchase more food than usual, for the shelves. This donation will allow us to continue with keeping the shelves stocked. A big “thank you” to each and every one who participated in this endeavor,” Anne Ticknor, Beausejour Food Bank.

Photo L-R: Volunteers Margaret Davies and Karen Kozyra.

Family Health & Learning Centre receives \$5,000

The proposed Family Health and Learning Centre (FHLC) project has been developed by the Primary Care Development Group Incorporated, a not for profit organization led by Municipal leaders and includes the Interlake-Eastern Regional Health Authority (IERHA), the Interlake Eastern Health Foundation (IEHF), and the Interlake-Eastern Family Medicine Residency Training Program as entities. The residents of the IERHA have faced serious physician shortages resulting in many residents not having a permanent family doctor and emergency rooms



often being closed requiring diversion to other hospitals.

This will be addressed through a FHLC, which involves the construction of a modern building on the Selkirk Regional Health Centre (SRHC) campus to provide the space for the full-scope practice with emphasis on providing patients with access to the full range of medical professionals in the form of a collaborative practice.

Dr. Ian Alexander, site lead University of Manitoba residency program states, “The development of the Family Health and Learning Centre is a vital piece in the recruitment and retention of physicians across the Interlake-Eastern Regional Health Authority. This (building) will allow more medical learners to train in our region and see what it has to offer both

medically, and in terms of lifestyle. I can't express enough gratitude that the first donation for this important step forward for the future of healthcare in our region comes from our staff."

Interlake Sexual Exploitation Educators Committee (ISEE) receives \$1,000



This committee provides awareness and education to classrooms across the Interlake from grades 7-12 on child and youth sexual exploitation – what it is and how to keep kids safe on the internet and social media platforms. This donation will support the purchase of gift cards for the classroom presentations booked for the 2021-22 and for the 2022-23 school year.

ISEE Co-Chair Tammy Thompson says “The Interlake Sexual Exploitation Educators (ISEE) want to extend our deepest thanks to the Interlake-Eastern RHA’s Five Dollar Club for supporting us in educating the youth, families and communities about the risks of child sexual abuse and how to prevent it. The funding you have

provided will allow us to continue our school and community presentations. Thank so much.”

Photo L-R: ISEE Co-Chairs, Tammy Thompson and Heidi Fingas.

Growing Years Family Resource Centre receives \$1,000

Growing Years Family Resource Centre’s Circle of Security early intervention program is designed to strengthen the relationship between a caregiver and child and is described as a “user-friendly” description of Attachment Theory. The children in our community deserve a safe, healthy attachment relationship to learn and grow. Funding received will be put towards the cost of this training.

“Receiving this donation means so much to us! The families that we serve deserve the best programs and resources that we can offer. We are extremely grateful for your generosity and on behalf of the staff, board and families that we serve, we cannot thank you enough for supporting us,” Shawna Cromie, Executive Director, Growing Years Family Resource Centre.



Photo L-R: Growing Years Family Resource Centre staff Harmony Rees, Shawna Cromie, and Donna Proudlove.

**Thank you to all club members for helping improve
health care across our region!**

